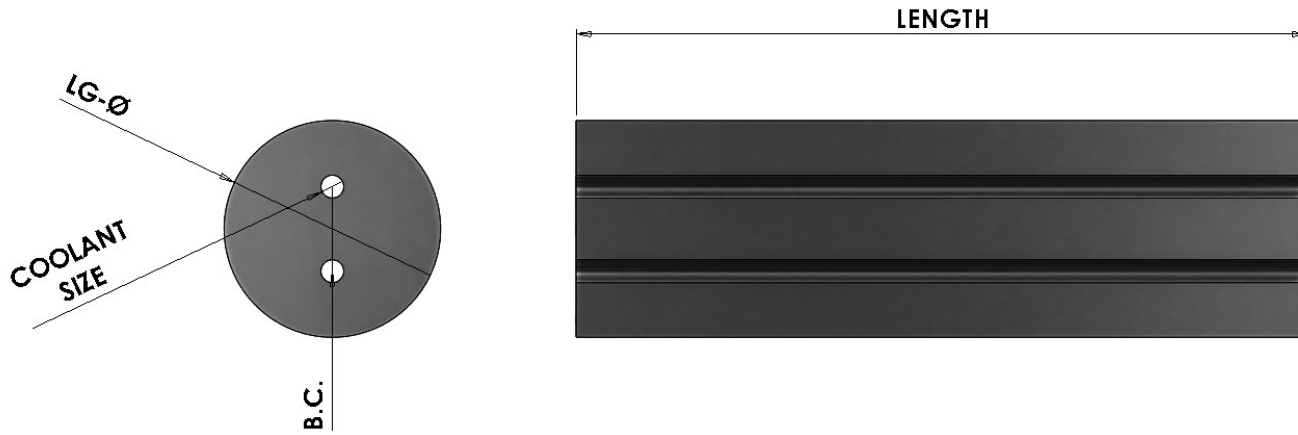




H.B. Carbide Company

Round Rod Two Straight Coolant Holes

5/25/2024



| | O.D. (in) | O.D. (mm) approximate | Length (in) | Length (mm) approximate | Hole Dim | Bolt Circle | Grade | Green Qty Available | Sintered Qty Available |
|---------------|-----------|--------------------------|-------------|----------------------------|----------|----------------|--------|------------------------|---------------------------|
| RS 10-15-09 | 0.176 | 4.50 | 13.00 | 330 | 0.035 | 0.059 | HB-110 | 0 | 0 |
| RS 10-18-09 | 0.176 | 4.50 | 13.00 | 330 | 0.035 | 0.071 | HB-110 | 0 | 0 |
| RS 12.5-18-08 | 0.223 | 5.60 | 13.00 | 330 | 0.031 | 0.071 | HB-110 | 0 | 0 |
| RS 12.5-20-09 | 0.223 | 5.60 | 13.00 | 330 | 0.035 | 0.079 | HB-110 | 0 | 0 |
| RS 15-11-05 | 0.254 | 6.50 | 13.00 | 330 | 0.020 | 0.043 | HB-110 | 24 | 0 |
| RS 15-15-09 | 0.254 | 6.50 | 13.00 | 330 | 0.035 | 0.059 | HB-110 | 0 | 0 |
| RS 15-17-08 | 0.254 | 6.50 | 13.00 | 330 | 0.031 | 0.067 | HB-110 | 39 | 0 |
| RS 15-20-09 | 0.254 | 6.50 | 13.00 | 330 | 0.035 | 0.079 | HB-110 | 48 | 0 |
| RS 15-23-09 | 0.254 | 6.50 | 13.00 | 330 | 0.035 | 0.091 | HB-110 | 12 | 0 |
| RS 15-24-12 | 0.254 | 6.50 | 13.00 | 330 | 0.047 | 0.094 | HB-110 | 0 | 0 |
| RS 15-30-09 | 0.254 | 6.50 | 13.00 | 330 | 0.035 | 0.118 | HB-110 | 39 | 0 |
| RS 15-30-12 | 0.254 | 6.50 | 13.00 | 330 | 0.047 | 0.118 | HB-110 | 0 | 0 |
| RS 18-18-08 | 0.301 | 7.60 | 13.00 | 330 | 0.031 | 0.071 | HB-110 | 0 | 0 |
| RS 18-20-09 | 0.301 | 7.60 | 13.00 | 330 | 0.035 | 0.079 | HB-110 | 0 | 0 |
| RS 18-30-12 | 0.301 | 7.60 | 13.00 | 330 | 0.047 | 0.118 | HB-110 | 0 | 5 |
| RS 18-35-09 | 0.301 | 7.60 | 13.00 | 330 | 0.035 | 0.138 | HB-110 | 19 | 0 |
| RS 20-11-05 | 0.333 | 8.50 | 13.00 | 330 | 0.020 | 0.043 | HB-110 | 53 | 0 |
| RS 20-17-08 | 0.333 | 8.50 | 13.00 | 330 | 0.031 | 0.067 | HB-110 | 0 | 0 |
| RS 20-20-09 | 0.333 | 8.50 | 13.00 | 330 | 0.035 | 0.079 | HB-110 | 21 | 0 |
| RS 20-26-12 | 0.333 | 8.50 | 13.00 | 330 | 0.047 | 0.102 | HB-110 | 42 | 0 |
| RS 20-30-12 | 0.333 | 8.50 | 13.00 | 330 | 0.047 | 0.118 | HB-110 | 0 | 0 |
| RS 20-33-09 | 0.333 | 8.50 | 13.00 | 330 | 0.035 | 0.013 | HB-110 | 144 | 5 |

Phone: 989.786.4223 / 800.459.8521

Fax: 989.786.4494 / 800.459.8547 (Sales)

4210 Doyle Drive - Lewiston, MI 49756

Web: www.hbcarbide.com

Mail To: sales@hbcarbide.com



H.B. Carbide Company

5/25/2024

Round Rod Two Straight Coolant Holes

| | O.D. (in) | O.D. (mm) approximate | Length (in) | Length (mm) approximate | Hole Dim | Bolt Circle | Grade | Green Qty Available | Sintered Qty Available |
|-------------|-----------|--------------------------|-------------|----------------------------|----------|----------------|--------|------------------------|---------------------------|
| RS 20-35-15 | 0.333 | 8.50 | 13.00 | 330 | 0.059 | 0.138 | HB-110 | 73 | 0 |
| RS 20-40-09 | 0.333 | 8.50 | 13.00 | 330 | 0.035 | 0.157 | HB-110 | 17 | 0 |
| RS 23-20-09 | 0.379 | 9.60 | 13.00 | 330 | 0.035 | 0.079 | HB-110 | 0 | 0 |
| RS 23-26-12 | 0.379 | 9.60 | 13.00 | 330 | 0.047 | 0.102 | HB-110 | 56 | 0 |
| RS 23-35-15 | 0.379 | 9.60 | 13.00 | 330 | 0.059 | 0.138 | HB-110 | 118 | 10 |
| RS 23-40-12 | 0.379 | 9.60 | 13.00 | 330 | 0.047 | 0.157 | HB-110 | 0 | 0 |
| RS 25-17-08 | 0.411 | 10.40 | 13.00 | 330 | 0.031 | 0.067 | HB-110 | 39 | 0 |
| RS 25-26-12 | 0.411 | 10.40 | 13.00 | 330 | 0.047 | 0.102 | HB-110 | 0 | 5 |
| RS 25-35-15 | 0.411 | 10.40 | 13.00 | 330 | 0.059 | 0.138 | HB-110 | 50 | 5 |
| RS 25-40-15 | 0.411 | 10.40 | 13.00 | 330 | 0.059 | 0.157 | HB-110 | 18 | 5 |
| RS 25-50-12 | 0.411 | 10.40 | 13.00 | 330 | 0.047 | 0.197 | HB-110 | 31 | 0 |
| RS 25-50-20 | 0.411 | 10.40 | 13.00 | 330 | 0.079 | 0.197 | HB-110 | 35 | 0 |
| RS 28-26-12 | 0.463 | 11.70 | 13.00 | 330 | 0.047 | 0.102 | HB-110 | 33 | 0 |
| RS 28-46-20 | 0.463 | 11.70 | 13.00 | 330 | 0.079 | 0.181 | HB-110 | 0 | 0 |
| RS 28-50-12 | 0.463 | 11.70 | 13.00 | 330 | 0.047 | 0.197 | HB-110 | 0 | 0 |
| RS 28-50-20 | 0.463 | 11.70 | 13.00 | 330 | 0.079 | 0.197 | HB-110 | 0 | 0 |
| RS 30-35-09 | 0.494 | 12.50 | 13.00 | 330 | 0.035 | 0.138 | HB-110 | 15 | 0 |
| RS 30-35-15 | 0.494 | 12.50 | 13.00 | 330 | 0.059 | 0.138 | HB-110 | 5 | 0 |
| RS 30-40-15 | 0.494 | 12.50 | 13.00 | 330 | 0.059 | 0.157 | HB-110 | 9 | 5 |
| RS 30-44-20 | 0.494 | 12.50 | 13.00 | 330 | 0.079 | 0.173 | HB-110 | 28 | 6 |
| RS 30-50-20 | 0.494 | 12.50 | 13.00 | 330 | 0.079 | 0.197 | HB-110 | 2 | 0 |
| RS 30-62-15 | 0.494 | 12.50 | 13.00 | 330 | 0.059 | 0.244 | HB-110 | 34 | 0 |
| RS 30-62-20 | 0.494 | 12.50 | 13.00 | 330 | 0.079 | 0.244 | HB-110 | 0 | 0 |
| RS 32-35-10 | 0.525 | 13.30 | 13.00 | 330 | 0.039 | 0.138 | HB-110 | 0 | 8 |
| RS 32-35-15 | 0.525 | 13.30 | 13.00 | 330 | 0.059 | 0.138 | HB-110 | 5 | 0 |
| RS 32-50-20 | 0.525 | 13.30 | 13.00 | 330 | 0.079 | 0.197 | HB-110 | 7 | 0 |
| RS 32-62-15 | 0.525 | 13.30 | 13.00 | 330 | 0.059 | 0.244 | HB-110 | 23 | 0 |
| RS 32-62-20 | 0.525 | 13.30 | 13.00 | 330 | 0.079 | 0.244 | HB-110 | 0 | 0 |
| RS 35-26-09 | 0.572 | 14.50 | 13.00 | 330 | 0.035 | 0.102 | HB-110 | 0 | 0 |
| RS 35-35-15 | 0.572 | 14.50 | 13.00 | 330 | 0.059 | 0.138 | HB-110 | 25 | 0 |
| RS 35-50-20 | 0.572 | 14.50 | 13.00 | 330 | 0.079 | 0.197 | HB-110 | 14 | 10 |
| RS 35-70-15 | 0.572 | 14.50 | 13.00 | 330 | 0.059 | 0.276 | HB-110 | 0 | 0 |
| RS 35-70-20 | 0.572 | 14.50 | 13.00 | 330 | 0.079 | 0.276 | HB-110 | 0 | 12 |
| RS 38-26-09 | 0.619 | 15.70 | 13.00 | 330 | 0.035 | 0.102 | HB-110 | 13 | 0 |
| RS 38-35-15 | 0.619 | 15.70 | 13.00 | 330 | 0.059 | 0.138 | HB-110 | 0 | 0 |

Phone: 989.786.4223 / 800.459.8521

Fax: 989.786.4494 / 800.459.8547 (Sales)

4210 Doyle Drive - Lewiston, MI 49756

Web: www.hbcarbide.com

Mail To: sales@hbcarbide.com



H.B. Carbide Company

5/25/2024

Round Rod Two Straight Coolant Holes

| | O.D. (in) | O.D. (mm) approximate | Length (in) | Length (mm) approximate | Hole Dim | Bolt Circle | Grade | Green Qty Available | Sintered Qty Available |
|-------------|-----------|--------------------------|-------------|----------------------------|----------|----------------|--------|------------------------|---------------------------|
| RS 38-50-20 | 0.619 | 15.70 | 13.00 | 330 | 0.079 | 0.197 | HB-110 | 20 | 12 |
| RS 38-62-20 | 0.619 | 15.70 | 13.00 | 330 | 0.079 | 0.244 | HB-110 | 14 | 0 |
| RS 38-70-20 | 0.619 | 15.70 | 13.00 | 330 | 0.079 | 0.276 | HB-110 | 0 | 0 |
| RS 40-35-15 | 0.650 | 16.50 | 13.00 | 330 | 0.059 | 0.138 | HB-110 | 16 | 5 |
| RS 40-50-20 | 0.650 | 16.50 | 13.00 | 330 | 0.079 | 0.197 | HB-110 | 4 | 0 |
| RS 40-62-20 | 0.650 | 16.50 | 13.00 | 330 | 0.079 | 0.244 | HB-110 | 1 | 8 |
| RS 40-80-20 | 0.650 | 16.50 | 13.00 | 330 | 0.079 | 0.315 | HB-110 | 12 | 14 |
| RS 43-62-20 | 0.702 | 17.80 | 13.00 | 330 | 0.079 | 0.244 | HB-110 | 12 | 0 |
| RS 43-80-20 | 0.702 | 17.80 | 13.00 | 330 | 0.079 | 0.315 | HB-110 | 0 | 0 |
| RS 45-50-20 | 0.733 | 18.60 | 13.00 | 330 | 0.079 | 0.197 | HB-110 | 0 | 0 |
| RS 45-62-20 | 0.733 | 18.60 | 13.00 | 330 | 0.079 | 0.244 | HB-110 | 0 | 0 |
| RS 45-70-20 | 0.733 | 18.60 | 13.00 | 330 | 0.079 | 0.276 | HB-110 | 0 | 0 |
| RS 45-90-20 | 0.733 | 18.60 | 13.00 | 330 | 0.079 | 0.354 | HB-110 | 12 | 4 |
| RS 48-50-20 | 0.780 | 19.80 | 13.00 | 330 | 0.079 | 0.197 | HB-110 | 0 | 1 |
| RS 48-62-20 | 0.780 | 19.80 | 13.00 | 330 | 0.079 | 0.244 | HB-110 | 5 | 5 |
| RS 48-90-20 | 0.780 | 19.80 | 13.00 | 330 | 0.079 | 0.354 | HB-110 | 0 | 0 |

Phone: 989.786.4223 / 800.459.8521
 Fax: 989.786.4494 / 800.459.8547 (Sales)
 4210 Doyle Drive - Lewiston, MI 49756
 Web: www.hbcarbide.com
 Mail To: sales@hbcarbide.com